



## Cleanomat® Pro-S

automatic partial flow filter stainless steel 16 bar

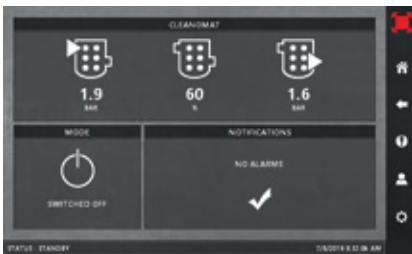
Corrosion is inevitable in piping systems of cooling and heating installations. This also applies to process water systems, ring mains, pumps, boilers, and heat exchangers. The use of SOTEX partial flow filters significantly improves the quality of the medium, leading to a longer service life and higher operational reliability of your installation. Within the SOTEX partial flow water filtration program, the fully automatic CleanoMat® Pro series is the most efficient and user-friendly solution. This highly reliable series has proven itself extensively in practice.

The CleanoMat® Pro-S has been developed as an extension to this successful line. This version distinguishes itself through the use of stainless steel components, ensuring that the medium comes into contact exclusively with stainless steel. This results in maximum protection against corrosion and even higher operational reliability. Additionally, the maximum operating pressure has been increased to no less than 16 bar.

The CleanoMat® Pro-S series is available in the following capacities: 2, 6, 12, 20, 36, 54 and 72 m<sup>3</sup>/hour.



CleanoMat® Pro-S 20



Example Touchscreen Cleanomat®

Thanks to the standard integrated Modbus TCP/IP communication module, the CleanoMat® Pro-S can be effortlessly integrated into any industrial network.

Real-time insight into performance and status?

You can easily read out all important signals via Modbus TCP/IP (read).

powerful neodymium magnet rod			1			2
max. number of magnets (option)	-			4		8
includes s.s. air vent(s) & s.s. drain valve			✓			
eye bolt closure			✓			
pump type (brand Grundfos)	CM 1-2	CM 5-2	CM 10-1	CM 15-1	CM 32-2	CM 25-1
number of pumps			1			2
motor power [kW]	0.30	0.46	0.60	1.30	3.70	1.70
connection voltage (50 Hz) [VAC]	1x 230V		3x 400			
filter bag included (50 µm)			2			
filter housing diameter [mm]		114			195	2x 195
filter housing height [mm]		362	518	590	980	2x 980
2x system connection [PN16]	G 1" F	G 1½" F	G 1½" F	G 2" F	G 2½" F	G 3" F
max. capacity [m <sup>3</sup> /hour]	2	6	12	20	36	54
system pressure* [bar]	> 0,5 ~ 16					
max. temperature [°C.]	90 @16 bar / 120 @10 bar					
max. system content [m <sup>3</sup> ]	46	138	276	460	828	1,242
width stainless steel frame [mm]		450		600	650	900
depth stainless steel frame [mm]		600		800	1,100	1,300
height of the unit (± 50) [mm]		1,600			1,800	1,650

	Cleanomat® Pro-S 2	Cleanomat® Pro-S 6	Cleanomat® Pro-S 12	Cleanomat® Pro-S 20	Cleanomat® Pro-S 36	Cleanomat® Pro-S 54	Cleanomat® Pro-S 72
powerful neodymium magnet rod			1				2
max. number of magnets (option)		-			4		8
includes s.s. air vent(s) & s.s. drain valve				✓			
eye bolt closure				✓			
pump type (brand Grundfos)	CM 1-2	CM 5-2	CM 10-1	CM 15-1	CM 32-2	CM 25-1	CM 32-2
number of pumps			1				2
motor power [kW]	0.30	0.46	0.60	1.30	3.70	1.70	3.20
connection voltage (50 Hz) [VAC]	1x 230V		3x 400				
filter bag included (50 µm)			2				
filter housing diameter [mm]		114			195		2x 195
filter housing height [mm]		362	518	590	980		2x 980
2x system connection [PN16]	G 1" F	G 1½" F	G 1½" F	G 2" F	G 2½" F	G 3" F	DN100
max. capacity [m <sup>3</sup> /hour]	2	6	12	20	36	54	72
system pressure* [bar]	> 0,5 ~ 16						
max. temperature [°C.]	90 @16 bar / 120 @10 bar						
max. system content [m <sup>3</sup> ]	46	138	276	460	828	1,242	1,656
width stainless steel frame [mm]		450		600	650	900	1,300
depth stainless steel frame [mm]		600		800	1,100	1,300	1,100
height of the unit (± 50) [mm]		1,600			1,800		1,650

The medium comes into contact with the following materials: filter housing, air vent, drain valve, pump housing and impeller stainless steel EN 1.4301, piping stainless steel EN 1.4404 and polyester filter bags.

\* The system will not operate at a system pressure of 0.5 bar or lower (dry-running protection).