

Cleanomat® Pro

automatic partial-flow filter unit

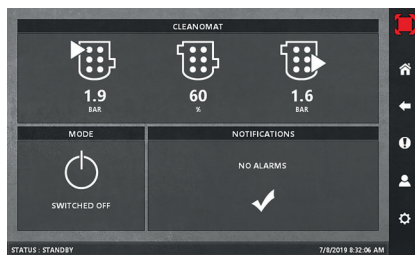
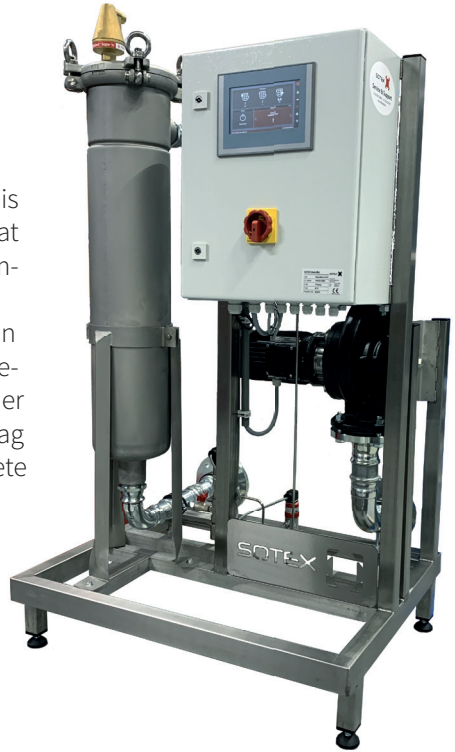
Corrosion occurs in many piping systems of cooling and heating installations. This also applies to process water systems and in loop pipes, pumps, boilers and heat exchangers. By using the SOTEX partial flow filter installations, you considerably improve the quality of the medium.

The most efficient and user-friendly version in the SOTEX partial flow water filtration program is the Cleanomat® Pro. The SDF filter is supplemented with a carefully selected centrifugal pump, switch panel with Siemens PLC and Touchscreen together with a robust pressure difference measurement with signaling when the filter bag is due for replacement. All this assembled on a stainless steel tube frame complete with piping. An extremely effective design to ensure that the partial flow filtration is fully automatic.

On the extremely user-friendly Touchscreen the pressure is displayed (before and after the filter housing) and the contamination degree in percent. Of course, the status with possible error messages and the program mode are also displayed. Continuous or time-controlled operation can be selected within the program mode, and the Cleanomat® Pro can also operate remotely if required.

The Cleanomat® Pro series is available in the following capacities: 2, 6, 12, 20, 36, 54, 72 and 108 m³/hour.

* at a system pressure of 0.5 bar and lower the installation will not work (dry-run protection).



Example Touchscreen Cleanomat® Pro

The Cleanomat® Pro is delivered with a communication module (Modbus TCP/IP), which enables the Cleanomat® to be integrated into the end customer's industrial network. Different signals of the Cleanomat® can be read out with Modbus TCP/IP.

magnet bar	
max. number of magnets (optional)	
air vent(s) & drain valve included	
eye-bolt filter lid	
pump model	
motor power [kW]	
current (50 Hz) [VAC]	
filter bag included (50 µm)	
diameter filter [mm]	
height filter [mm]	
system connection (2x)	
max. capacity [m ³ /uur]	
system pressure* [bar]	
max. temperature [°C.]	
max. system content [m ³]	
width ss tube frame [mm]	
depth ss tube frame [mm]	
height ss tube frame (± 50) [mm]	

	Cleanomat® Pro 2	Cleanomat® Pro 6	Cleanomat® Pro 12	Cleanomat® Pro 20	Cleanomat® Pro 36	Cleanomat® Pro 54	Cleanomat® Pro 72	Cleanomat® Pro 108
magnet bar			1					2
max. number of magnets (optional)					4			8
air vent(s) & drain valve included				✓				
eye-bolt filter lid				✓				
pump model	Alpha	TP32	TP40	TP50	TP65	TP80	TP100	TP125
motor power [kW]	0.040	0.25	0.25	0.37	0.55	1.5	1.1	2.2
current (50 Hz) [VAC]	1x 230	3x 400 (optional 1x 230)				3x 400		
filter bag included (50 µm)					2			
diameter filter [mm]		114			195			2x 195
height filter [mm]	362	362	518	590	980	980	2x 980	2x 980
system connection (2x)	G 3/4" F	DN32 PN10	DN40 PN10	DN50 PN10	DN65 PN10	DN80 PN16	DN100 PN16	DN125 PN16
max. capacity [m ³ /uur]	2	6	12	20	36	54	72	108
system pressure* [bar]				>0.5 ~ 10				
max. temperature [°C.]	90				120			
max. system content [m ³]	46	138	276	460	828	1,242	1,656	2,484
width ss tube frame [mm]	530	700		900		1,000	920	1,200
depth ss tube frame [mm]	460	400		700		1,000	920	1,100
height ss tube frame (± 50) [mm]	1,450	1,030	1,150	1,335	1,540		1,600	

The medium comes into contact with the following materials: stainless steel 304 filter housing, stainless steel 304 piping, coated cast iron (pump), brass-nickel/brass/stainless steel fittings, and polyester filter bags.